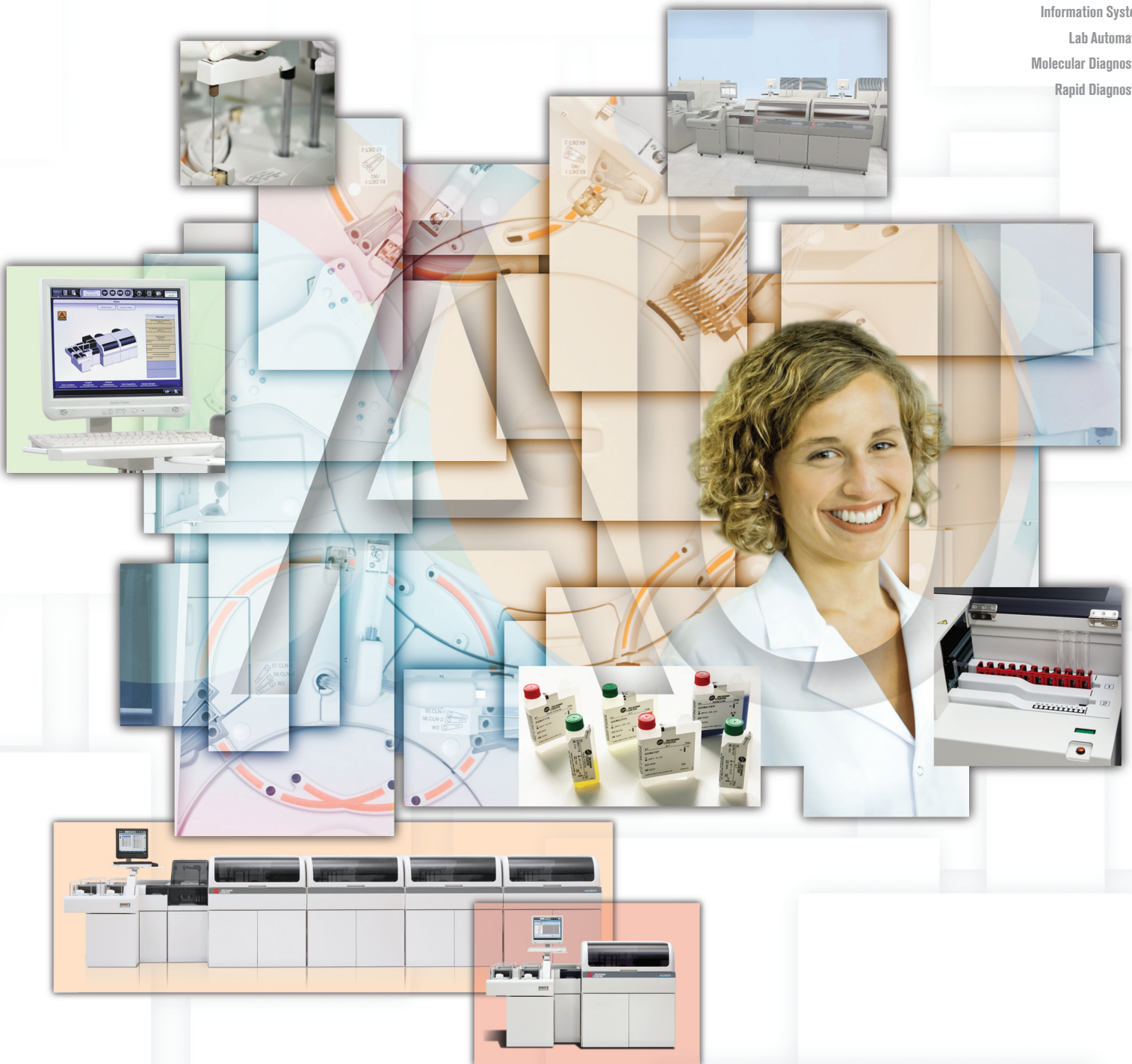


Completing the performance picture.

AU5800 Clinical Chemistry Systems

- Blood Banking
- Centrifugation
- Chemistry**
- Flow Cytometry
- Hematology
- Hemostasis
- Immunoassay
- Information Systems
- Lab Automation
- Molecular Diagnostics
- Rapid Diagnostics



Proven reliability and powerful throughput for your laboratory.

AU5840

- Up to 120 onboard simultaneous chemistries
- Up to 8,000 photometric tests/hr
- Combined with single ISE, up to 8,900 tests/hr
- Combined with dual ISEs, up to 9,800 tests/hr



AU5830

- Up to 120 onboard simultaneous chemistries
- Up to 6,000 photometric tests/hr
- Combined with single ISE, up to 6,900 tests/hr
- Combined with dual ISEs, up to 7,800 tests/hr



AU5800 chemistry systems are designed to meet a full spectrum of processing throughputs for various laboratory environments. From high-volume hospitals to ultra high-volume reference laboratories, the AU5800 completes the performance picture as an integral addition to the AU family of chemistry analyzers. The AU5800 continues to follow high standards of AU reliability and true random access capability – and with more flexibility – offering one to four module configurations with optional single or dual ISE flow cells.

AU5820

- Up to 111 onboard simultaneous chemistries
- Up to 4,000 photometric tests/hr
- Combined with single ISE, up to 4,900 tests/hr
- Combined with dual ISEs, up to 5,800 tests/hr

AU5810

- Up to 57 onboard simultaneous chemistries
- Up to 2,000 photometric tests/hr
- Combined with single ISE, up to 2,900 tests/hr
- Combined with dual ISEs, up to 3,800 tests/hr



Enjoy all the benefits that **AU5800** can bring to **your laboratory.**

Powerful Performance

Today's laboratories are required to deliver premium diagnostic services to ensure the highest levels of speed and responsiveness. Designed for quick turnaround of high-volume testing, and combined with a robust menu of quality reagents, the AU5800 is equipped to deliver critical benefits to your laboratory:

Ease of Use – User-friendly Windows® software reduces training time and allows for customized menus, icons and color-keyed graphics – plus ease of use with built-in manuals and maintenance videos.

Easy to Use

Standardization Across AU Family – Hardware components, reagents and software are standardized to minimize training requirements and streamline inventory management.

Standardized

Precision Engineering – Leading the way with proprietary precision optics and spot photometer technology, AU chemistry systems provide your laboratory with outstanding test accuracy.

Integration Capability – AU5800 is engineered for connectivity with Beckman Coulter's Power Processor to allow for the optional integration of chemistry, immunoassay and clinical information systems solutions to meet your lab's exact needs.

Broad, Standardized Test Menu – The comprehensive AU test menu consists of more than 125 convenient, bar-coded liquid reagents that are standardized across the entire AU family of chemistry systems.

Reliable

Intelligent Results Management – Abnormal sample results are handled automatically, initiating laboratory-definable options for reflex repeat, and on-board repeat dilutions or concentrations. This automation capability results in reduced operator costs and increased focus on patient results.

Scalable

Improved Safety – Instrument sample probes are equipped with clot detection functionality. Sample and reagent probes have crash prevention to safeguard results and maximize instrument uptime. The LIH serum indices can be cross-linked to results so that assays that are sensitive to LIH are appropriately flagged. This ensures integrity of patient results.

Efficient

Remote Diagnostic Management – PROService* is a remote diagnostic solution that enables the remote transfer, monitoring, and analysis of data from connected Beckman Coulter systems and instrumentation in the customer laboratory. This allows Beckman Coulter's Service and Support organizations to help diagnose problems, troubleshoot and resolve technical issues, and in some cases, to preemptively report and address potential failures with connected Beckman Coulter systems.

*Not available in all geographies.

Broad, Standardized Test Menu

AU Standardization

Whatever AU system you choose, the results remain the same:

- Standardized analytical platforms
- Standardized reagents, calibrators and controls
- Standardized with the same reference ranges
- Standardized with the same consumables and parts
- Standardized with the same consolidated, expansive test menu

AU Reagents

Simple, economical and easy to use. Concentrated formulations, maximizing onboard capacity. Packaged in bar-coded bottles for drop-in convenience.

Flexible Packaging

Reagents are packaged in multiple kit sizes.

Reagent Usage Monitoring

Reagent inventory capability tracks and predicts your daily needs and usage.

Advanced Calibration and QC

Perform calibration and QC on a maximum of five reagent bottles (bottle to bottle/lot to lot) for the same assay – in advance.

Large Capacity Reagent Compartments

More tests, more menu capacity.



Diabetes

General Chemistry

Renal

Toxicology

Lipids

Anemia

Therapeutic Drugs

Cardiac

Inflammatory

Nutritional Assessment

Specialty

Specific Proteins

Drugs of Abuse

Hepatic

Powerful performance for better results and greater productivity.



AU System Features

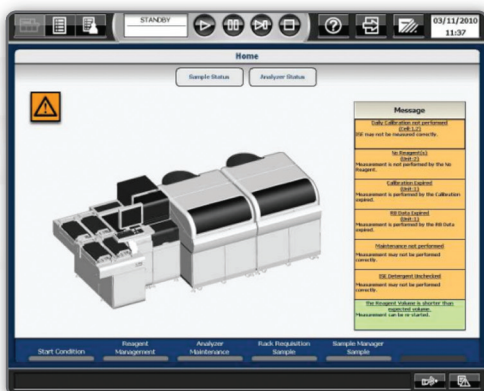
Ultra Small 1.0 µL Sample Dispensing with High Accuracy and Precision

- Used for applications where small volumes are typical (i.e., pediatric and veterinarian)
- Sample clot and liquid level detection
- Sample and reagent probe crash protection



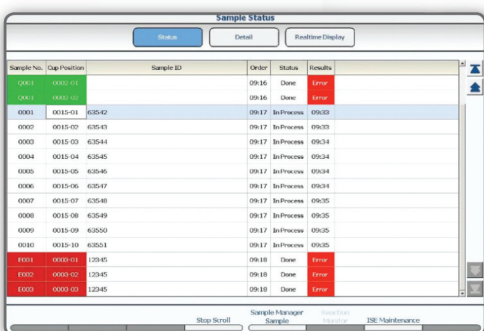
Two Optional High-Speed ISE Units

- Single ISE with a maximum throughput of up to 900 tests/hr
- Dual ISE flow cell with a maximum throughput of up to 1,800 tests/hr
- Robust, long-life electrodes: 6 months or 40,000 tests
- Electrodes can be replaced individually
- No preconditioning; electrodes ready-to-use



Intuitive Graphical User Interface

- Touch screen graphics, color coded alerts and tab functions ensure easy navigation
- Direct menu page access via one click is possible
- Customizable user menu

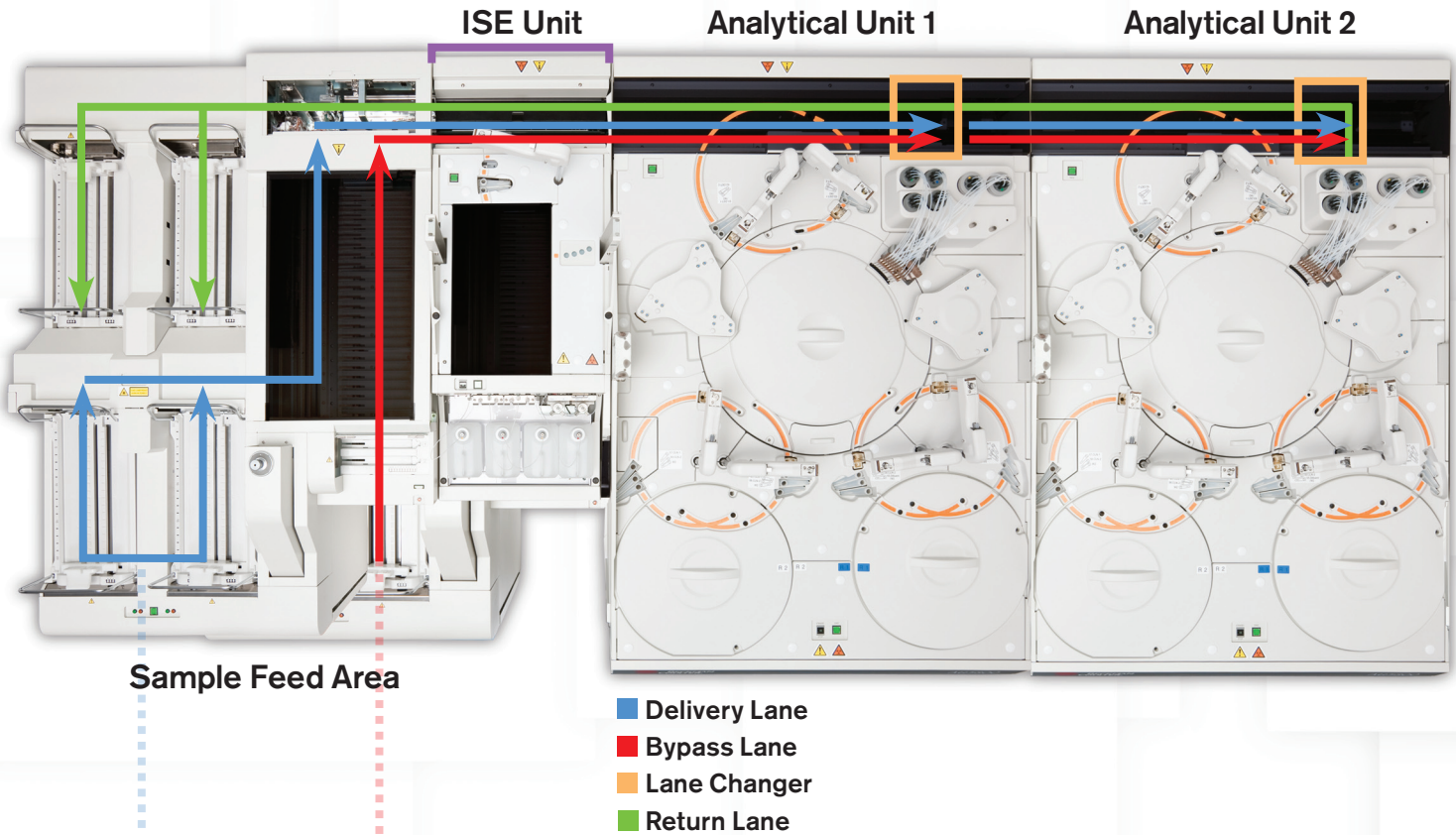


Real-Time Monitoring of Sample Status

- Includes analysis current status; real-time error status and expected analysis completion time

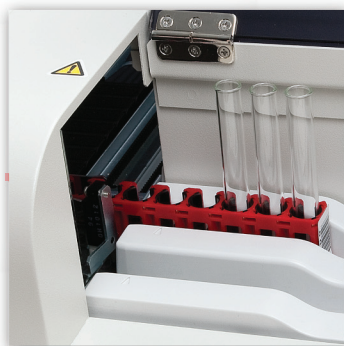
Intelligent Sample Transportation

The AU5800 employs three transportation lanes for intelligent sample management. A bypass lane provides flexible options for sample transportation by processing STAT sample racks prior to routine sample racks – or skipping units without test requisition.



Sampler Input Loader

- Removable trays
- 2 x 20 rack input tray; capacity of 400 tubes can be loaded simultaneously
- Universal racks across the AU family
- One rack can accommodate mixed sample types and sizes



Priority (STAT) Port

- Load up to 20 samples simultaneously
- STAT rack bypasses routine sample racks for faster turnaround time
- Priority for QC and calibrator racks

AU 3 & 60 maintenance

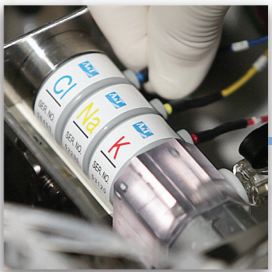
More time to **focus** on patient **results**.

Quick and Easy Replacement of Consumables

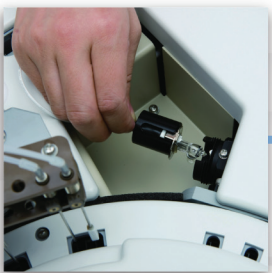
- ✓ No more than 3 steps
- ✓ Not longer than 60 seconds
- ✓ No tools required



Replace mixers



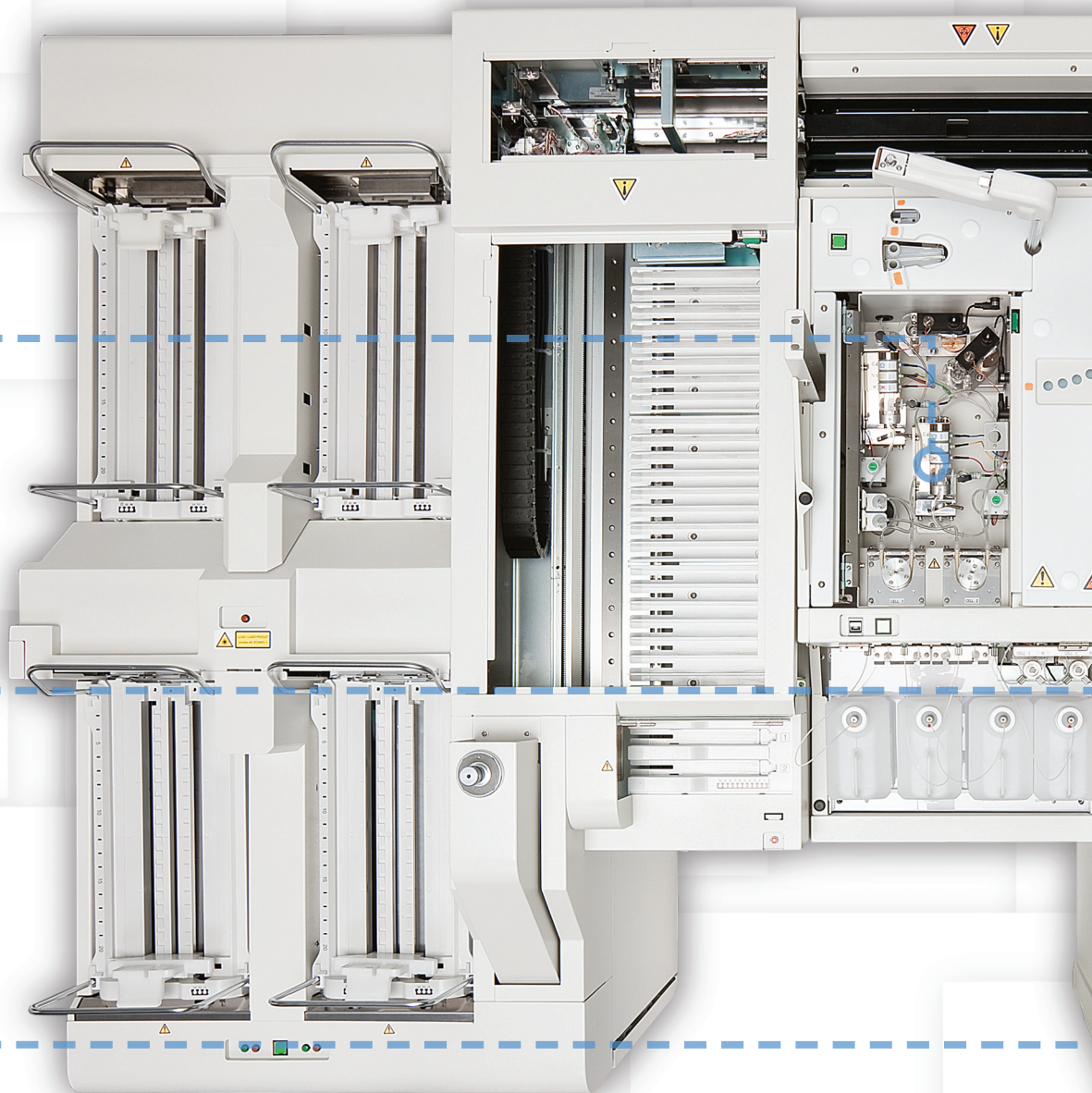
Replace the electrode

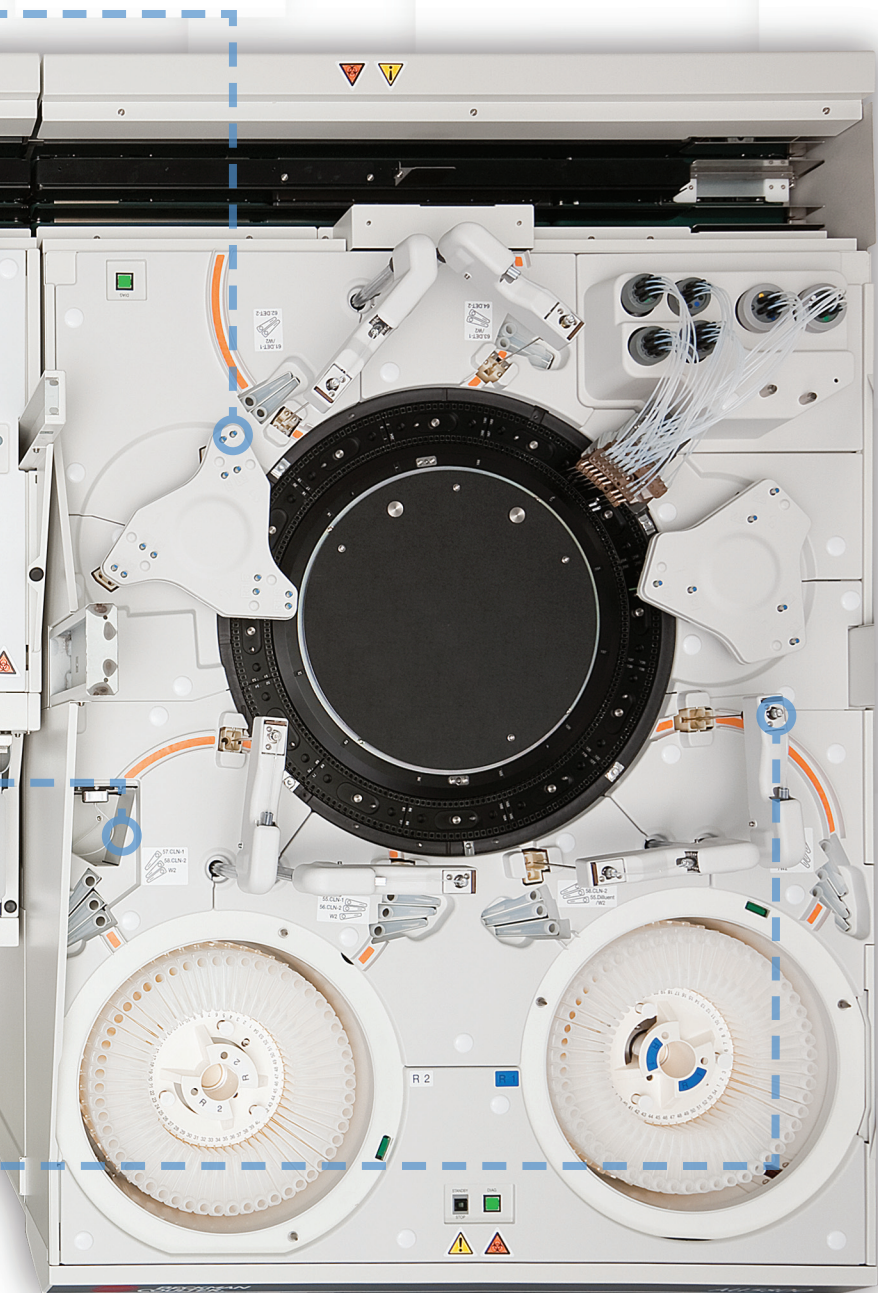


Replace the light source lamp

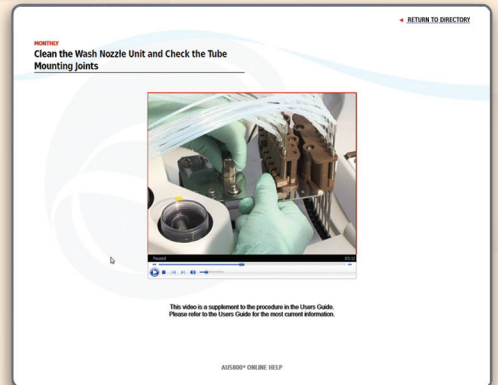


Replace sample and reagent probes

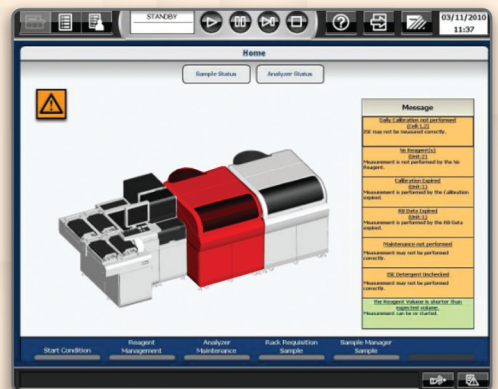




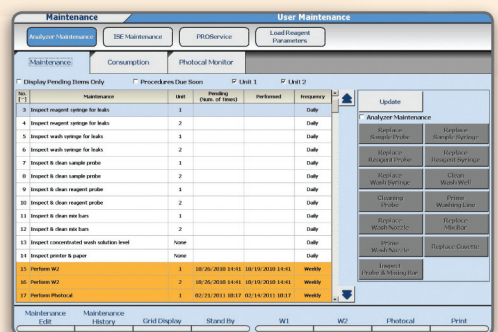
Maintenance Made Easy



Embedded online maintenance videos and user guide



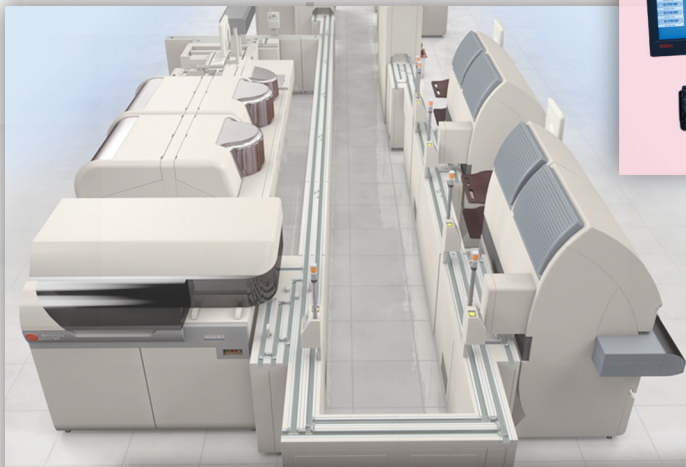
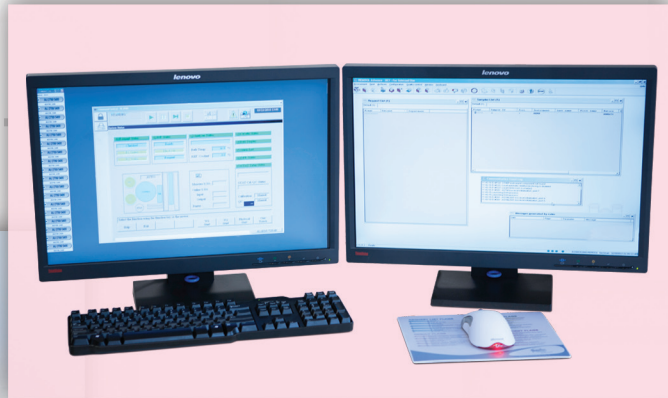
Color-coded alert icons and direct access to the error components and messages log



Intuitive maintenance menu

Automation that saves you time. More solutions that work for you.

Beckman Coulter helps your lab maximize the productivity of your current resources and improve turnaround time with a full spectrum of automation and information systems solutions.



Simplify and automate processes and workflow in your laboratory to deliver the highest levels of efficiency, speed and cost savings:

- Beckman Coulter's Power Processor automation solutions – engineered for connectivity with AU5800 chemistry systems and UniCel Dxl immunoassay analyzers – for optional high throughput workstation consolidation.
- Command Central enables remote monitoring and access of instruments and automation consoles from a single workstation. This real-time instrument monitoring helps optimize laboratory management and improve decision making. Command Central integrates with Beckman Coulter's REMISOL Advance[†] data management software to create a comprehensive workflow improvement system.

See your Beckman Coulter representative to discuss the best solutions for your laboratory.





Laboratories around the world rely on Beckman Coulter's promise of quality, integrity and innovation. Our total laboratory solutions deliver accurate information, from medical research breakthroughs, to clinical trials, to laboratory diagnostics and point-of-care testing. A partnership with Beckman Coulter extends far beyond our products. With proven expertise in analyzing laboratory test processes, we collaborate with you to understand your requirements and create flexible solutions that meet your evolving needs.

We're better together. And together we help make a positive impact on people's lives.



*All trademarks are the property of their respective owners.
†REMISOL Advance is a trademark of Normand-Info SAS.

Beckman Coulter, the stylized logo, AU, DxI and UniCel are registered trademarks of Beckman Coulter, Inc.

For Beckman Coulter's worldwide office locations and phone numbers, please visit "Contact Us" at www.beckmancoulter.com
B2011-12383-DG-2K ©2011 Beckman Coulter, Inc. PRINTED IN U.S.A.